

# ACCESSORIES/OPTIONS



AUXILIARY/PILOT CONTACTS.....	P. 245
ADDITIONAL WATERTIGHTNESS .....	P. 246
LID CONFIGURATIONS .....	P. 247
PLUG CAPS.....	P. 248
PAWL OPTIONS.....	P. 249
AUXILIARY SWITCHES.....	P. 250
SELF-EJECTING DEVICES .....	P. 251

# AUXILIARY/PILOT CONTACTS

Auxiliary/pilot contacts can operate secondary circuits on the inlet or receptacle side of the circuit. They make last and break first when the plug is engaged or disengaged from the receptacle. To order a device with auxiliary/pilot contacts, add the appropriate suffix numbers listed to the right. Amperage ratings for the auxiliary/pilot contacts depend on the device size and operating voltage (see table below).



Switch-rated plugs & receptacles with auxiliary/pilot contacts can make the operation of a facility safer and more efficient by facilitating the use of advanced control schemes. They allow facilities to:

- ▶ **Quickly reconfigure or change-out processing equipment.** – The need for hardwiring or multiple plug connections is eliminated.
- ▶ **Reduce equipment costs.** – The need for separate connections for the auxiliary/pilot contacts is eliminated.
- ▶ **Simplify the monitoring of key parameters.** – Thermistors on a motor driving a critical process pump can communicate temperature problems via auxiliary/pilot contacts in the Decontactor.
- ▶ **Communicate alarm signals or turn off equipment.** – When a motor is disconnected or unplugged, the auxiliary/pilot contacts can convey a signal that will de-energize the motor starter.

## Auxiliary Contact Amperage Ratings

Product	DSN20	DSN30 DSN60	DSN150	DS20 DS30 DS60 2 Aux DS100C 2 Aux DSN100 2 Aux	DS100 DS200	DS60 3+4 Aux DS100C 3+4 Aux DSN100 3+4 Aux	DXN30 DXN60	PFQ300	PF (all sizes)	DR30 DR50 DR100 2 Aux	DR150 DR225 DR250 DR400	DR1003+4Aux	SP	SPeX	DS7c	DR7c
120 VAC	0.60 A	6 A	1.50 A	6 A	1.50 A	3 A	5 A*	7 A	10 A*	6 A	1.50 A	3 A	0.60 A**	-	-	-
240 VAC	0.30 A	3 A	0.75 A	3 A	0.75 A	1.50 A	5 A*	5 A	10 A*	3 A	0.75 A	1.50 A	1 A	6 A* (220V max)	-	5 A*
480 VAC	-	1.50 A	0.38 A	1.50 A	0.38 A	0.75 A	5 A	2 A*	10 A*	1.50 A	0.38 A	0.75 A	-	-	5 A* (400V max)	-
600 VAC	-	1.20 A	0.30 A	1.20 A	0.30 A	0.60 A	5 A* (550V max)	2 A*	10 A*	1.20 A	0.30 A	0.60 A	-	-	-	-

\* Rating is not UL or CSA listed \*\*Rating is not UL listed.

## Ordering Information

To order on a device, add the appropriate suffix to both the inlet and receptacle part numbers.

Product	DSN					DS						DXN		PFQ	PF			DR					DR7c DS7c	SP				
	20*	30	60	100	150	20	30	60 Poly	60 Metal	100C Poly	100C Metal	100	200	30	60	300	300	400	600	30	50	100 Poly			100 Metal	150	250	
2 contacts	-972	-972	-972	-972	-262	-972	-972	-972	-972	-972	-262	-972	-972	-972	-972	-	-	-	-	-	-972	-972	-972	-972	-262	-972	-172	Standard 2
3 contacts	-	-	-973	-263	-263	-	-973	-263	-263	-263	-263	-263	-	-	-	-	-	-	-	-	-	-973	-263	-263	-263	-	-173	-
4 contacts	-	-	-974	-264	-264	-	-974	-264	-264	-264	-264	-264	-174	-	-	Standard 8	Standard 4	Standard 4	Standard 4	-	-	-974	-264	-264	-264	-174	-	-
5 contacts	-	-	-	-	-975	-	-	-	-	-	-	-975	-	-	-	-	-	-	-	-	-	-	-	-975	-	-	-	
6 contacts	-	-	-	-	-976	-	-	-	-	-	-	-976	-976	-	-	-	-	-	-	-	-	-	-	-976	-976	-	-	

\* Suffix on receptacle only.

## Replacement Auxiliary Contacts

Product	DSN				DS				DR			
	30	60	100	150	20	30	60	100C	30	50	100	150
Male contact	61-3A011-380	61-6A011-264	31-6A011-172	61-9A011-219	31-1A011-380	61-6A011-262	31-6A011-172	31-6A011-172	31-1A011-380	61-6A011-262	31-6A011-172	61-9A011-219
Female contact	61-3A021-380	61-6A021-264	31-6A229	61-9A229	31-1A021-380	61-6A021-262	31-6A229	31-6A229	31-1A021-380	61-6A021-262	31-6A229	61-9A229

# ADDITIONAL WATERTIGHTNESS

For additional water protection when the inlet and receptacle are mated the following Type 4X option may be ordered for DS or DR models.

## Type 4X Watertightness

Type 4X waterproofing is used for applications where connectors, plugs, and receptacles are subjected to water pressure. A gasket is added to the inlet and the receptacle lid is made to normally close.

*Example:*

*To order on a device add suffix **-4X** to the inlet and receptacle part number.*

*DS20 Poly Inlet 2P + E = 33-18162-**4X***



# LID CONFIGURATIONS

There are four standard open lid configurations depending on the model and size of the device: 180° open, 120° open, 90° open and detached. Optionally, customers can order lids that are normally closed, or if the lid opens to 120° as standard, it can be ordered to open 180° for flush mounted inlets (DS & DR only).

## Standard Lid Configurations



### 180° OPENING LIDS

#### Standard for:

DSN20, DSN30, DSN60, DSN100, DSN150

DS20, DS30, DS60, DS100C, DS100, DS200

DR30, DR50, DR100, DR150, DR250, DR400

DSDC1, DSDC3, DSDC6, DSDC9, DSDC2

DS7c, DR7c

DSN12c, DSN24c, DSN37c

DXN20

DX1, DX3, DX6, DX9

### 120° OPENING LIDS

#### Standard for:

PN

DN9c, DN20c

PXN12c

### 90° OPENING LIDS

#### Standard for:

DXN30, DXN60

### DETACHED LIDS

#### Standard for:

PN stainless steel

DS24c stainless steel

DS37c stainless steel

PFQ300, PF300, PF400, PF600

SP, SPeX

CS1000

DXA1

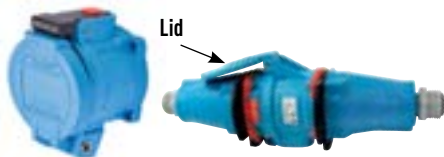
DXN25c, DXN37c

**Notes:** DSN, DS, DR, and DSDC Hazardous receptacles have standard lid configurations that are the same as their industrial ordinary location equivalents, except they are normally closed.

## Optional Lid Configurations

### Closed Lid

Designed for receptacles only. A normally closed lid configuration is available for applications where it is desirable to protect the receptacle face from dust, debris, or potential damage. This option provides a lid that will automatically close to a pre-latch position after removal of the plug. The lid must still be latched manually in order to achieve rated watertightness.



Normally closed lid configuration is recommended for cord to cord applications to keep the lid tucked in and avoid damage.

### CLOSED LID

#### Available as option on:

DSN (All sizes)

DS (All sizes)

DR (All sizes)

DN (All sizes)

#### Examples:

To order a DSN, DS, DR, or DN device with a closed lid add **-NC** to the receptacle part number.

DS20 Poly receptacle 2P+G = 33-14162-NC

To order a DXN device with a closed lid add **-R** to the receptacle part number.

DXN20 receptacle 3P+G = 22-14043-R

### 180° Open Lid for Flush Mounted Inlets (DS, DR & DXN devices only)

When ordering an inlet that will be mounted directly flush against a wall or surface without an angle or box, the connector (receptacle + handle) may require the lid to be set for 180° opening.



### 180° OPEN LID FOR FLUSH MOUNTED INLETS

#### Available as option on:

DN9c, DN20c

DXN30, DXN60

#### Example:

To order this configuration add suffix **-180** to the receptacle part number.

DXN30 Receptacle 3P+N+G= 22-34047-180

# INLET/PLUG CAPS

## Protective Inlet/Plug Caps

Neoprene caps provide an extra level of protection from dust, dirt, and rough handling for male plugs.



Typical for DSN, DS20, DS30, DS60, DS100C, DR30, DR50, DR100, DXN

Typical for DSN150, DS100, DS200, DR150, DR250, DR400

Typical for DN devices

Typical for PN devices

## Padlockable Inlet/Plug Caps

Padlockable caps can be locked in place to prevent unwanted removal.



Typical for: DSN20, DSN30, DSN60, DSN100 DS20, DS30, DS60, DS100C DR30, DR50, DR100 DSDC1, DSDC3, DSDC6

Typical for: DS60, DS100C, DS100, DS200 DSN100, DSN150, DR100, DR150, DR250, DR400, DSDC9, DSDC2

## Ordering Information

Model	Protective Inlet/Plug Cap
DSN20/DSN12c	61-1A426
DSN30/DSN24c	61-3A426
DSN60/DSN37c	61-6A426
DSN150	31-9A426
DS20/DR30/DSDC1	31-1A426
DS30/DR50/DSDC3	31-3A426
DS60/DS100c/DSN100 DR100/DS7c/DR7c/DSDC6	31-6A426
DS100/DR150/DSDC9	31-9A426
DS200/DR250/DR400/DSDC2	39-2A426
DXN20	22-1A426
DXN30	22-3A426
DXN60	22-6A426
DN9c	19-1A126*
DN20c	19-6A126*
PN20/PN7c/PN12c	01-NA426
DXA1	281A426
CS1000	45-3A126

\* Non-Watertight

## Ordering Information

Model	Padlockable Inlet/Plug Cap
DSN20/DSN12c	61-1A826
DSN30/DSN24c	61-3A826
DSN60/DSN37c	61-6A826
DSN150/DS100/DSDC9/DR150	DS9MC (Alum)
DS20/DSDC1/DR30	DS1PC (Poly)
DS30/DSDC3/DR50	DS3PC (Poly)
DS60/DSDC6/DS100c/DR100/DS7c/DR7c	DS6MC (Alum)/DS6PC (Poly)
DS200/DSDC2/DR250/DR400	DS2MC (Alum)

**Notes:** A 5/16" diameter lock/pin is needed for proper operation. Do not substitute a smaller diameter lock/pin.

Model	Springloaded Padlockable Cap
DSN30	61-3A226
DSN60	61-6A226
DS20/DR30/DSDC1	31-1A226
DS30/DR50/DSDC3	31-3A226
DS60/DS100C/DS7c DR7c/DR100/DSDC6 (Poly)	31-6A226
DS60/DS100C/DS7c DR7c/DR100/DSDC6 (Metal)	39-6A226

**Notes:** A 5/16" diameter lock/pin is needed for proper operation. Do not substitute a smaller diameter lock/pin.

The inlet lockout hole is not completely sealed off by the DS\_MC and Springloaded Padlockable caps. If environmental protection is needed while the plug is disconnected, the inlet should be ordered without the standard hole.

Example:

To order an inlet without a lockout hole add suffix -A155 to the inlet part number.

DS60 Metal inlet 2P+G= 37-68162-A155

# PAWL OPTIONS

## Mushroom Pawl

The mushroom pawl is available as an alternative to the standard pawl. It is ideal for a quick disconnection of motors and other equipment, or in areas where employees use gloves and it is difficult to operate the standard pawls. The button has a red "stop" label for easy recognition.

*Example:*

To order on a receptacle add suffix **-375** to the receptacle part number.

DSN20 poly receptacle 3P+G=63-14073-**375**



**Available on:**

DSN, DS, DR and DN devices only

## Screw-Type Locking Pawl

Screw-type locking pawls are available that include a screw which can be tightened to "lock" the pawl in place thus preventing release of the plug or the lid.

*Example:*

To order on a receptacle add suffix **-845** to the receptacle part number.

DS30 poly receptacle 3P+G =33-34163-**845**



**Available on:**

DSN, DS, DR and DN devices only

## Padlockable Mushroom Pawl

A padlockable mushroom pawl can be provided with a .32" hole that enables the lid to be locked closed, prohibiting access to the receptacle. Lockout Pin (LP-843) sold separately.

*Example:*

To order on a receptacle add **-375-843** to the receptacle part number.

DS30 poly receptacle 3P+G = 33-38043-**375-843**



Optional pin sold separately.

**Available on:**

DSN, DS, DR and DN devices only

**Notes:** A 5/16" diameter lock or lockout pin is needed for proper operation. Do not substitute a smaller diameter lock/pin.

## Padlockable Standard Pawl

Standard pawls can be provided with a .32" hole that allows the lid of the receptacle to be locked closed or alternatively the plug can be locked in the connected position. Lockout Pin sold separately

*Example:*

To order on a receptacle add suffix **-843** to the receptacle part number.

DSN20 poly receptacle 3P+G = 63-14073-**843**



Optional pin sold separately.

**Available on:**

DSN, DS, DR, DXN and DN devices only

**Notes:** A 5/16" diameter lock or lockout pin is needed for proper operation. Do not substitute a smaller diameter lock/pin.

## Metal Pawl

Metal pawls are standard with metal receptacles only. If you prefer a metal pawl on a poly receptacle, add suffix **-824** to the poly receptacle part number.

*Example:*

DS60 poly receptacle 3P+G=33-64163-**824**



**Available on:**

DSN, DS, DR and DXN devices only

# AUXILIARY SWITCHES

Female receptacles/connectors with up to 3 poles/4 wires are available with an optional auxiliary switch for operating secondary circuits on the line side of the circuit. The auxiliary switch is rated at 5A and includes one set of NO and one set of NC contacts. With the three phase devices the neutral contact of the plug operates the switch which is located in the neutral contact position in the receptacle. With the single phase units the third phase contact on the plug operates the switch which is located in the third phase contact position in the receptacle.



## Examples:

Order a device with an auxiliary switch by adding suffix **-270** to the receptacle or inlet part number.

*DSN30 Poly Receptacle 3P+G = 63-34043-270*

*DSN30 Poly Inlet 3P+G=63-38043-270*

**Notes:** Devices ordered with auxiliary switch option are not UL/CSA listed.

# SELF-EJECTING DEVICES

## General

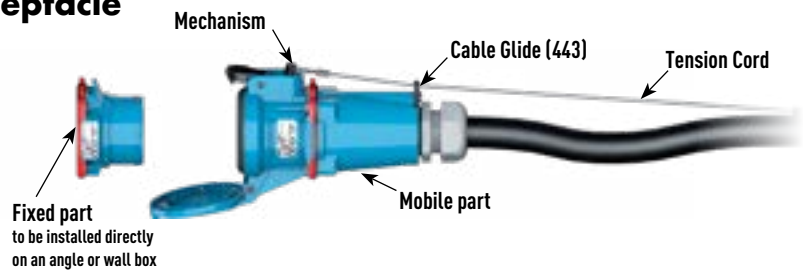
Self-ejecting devices protect equipment from damage caused when mobile equipment is accidentally moved without disconnecting power. Self-ejecting systems are designed to automatically release the plug or connector when tension is detected by a tension cord attached between the pawl and the power cable.

## Applications

Self-ejecting devices are commonly used on truck hook-ups, cranes, railroad cars, refrigerated food carts, delivery vehicles and other portable equipment.

## Self-Ejecting Female Connector/Receptacle

For self-ejecting female connectors, the standard pawl on the connector is replaced by a “shark’s fin” pawl that is attached to the power cable via a tension cord. If the connected equipment is moved, the tension cord lifts the shark’s fin pawl and the connector is released before damage can occur.



### Available on:

DSN (All sizes)

DS (All sizes, except DS200)

DN9c\*, DN20c\*, DS7c, DR7c

### How To Order:

To the female receptacle, add suffix **-354**  
To the handle part number, add suffix **443**

#### Example:

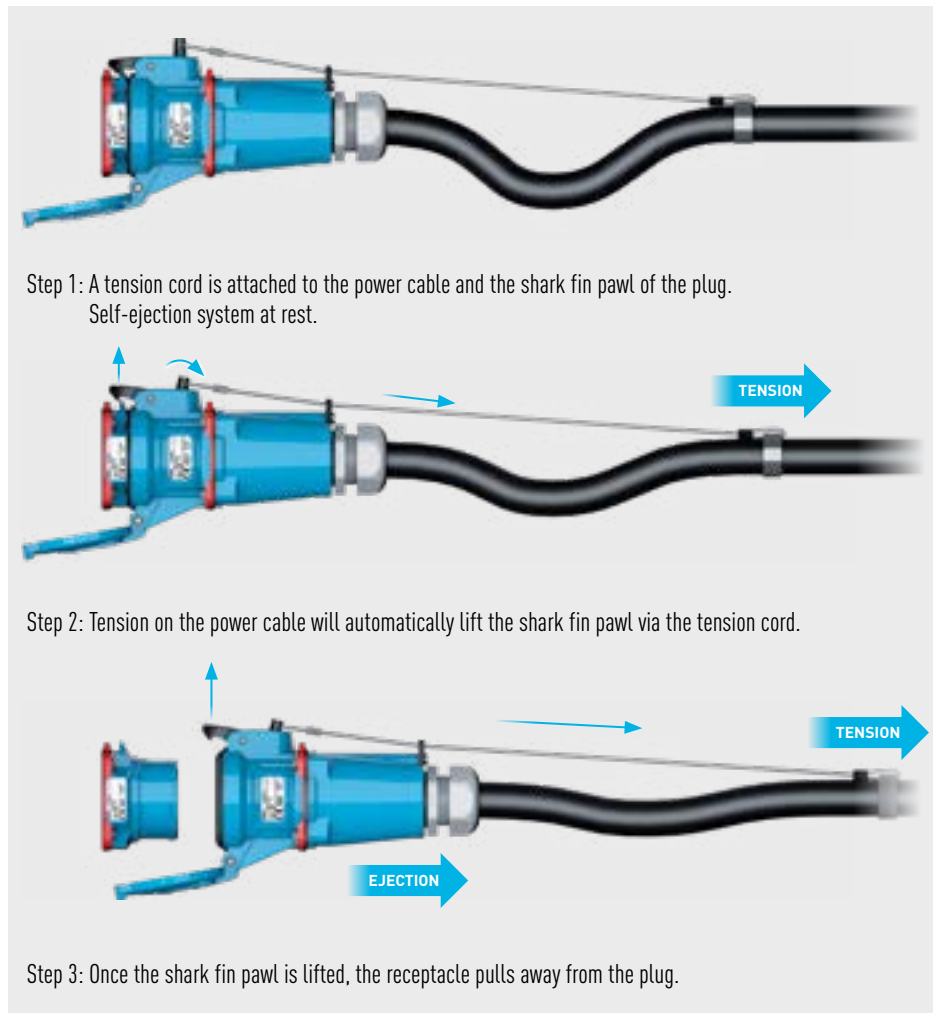
To order a DSN30 self-ejecting receptacle and poly handle (3/4" NPT), the part numbers would be:

Receptacle: 63-34043-354

Handle: 512PON07443

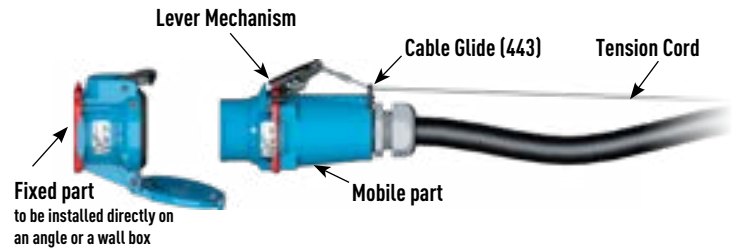
\* For DN9c and DN20c ordering, use suffixes listed in DN9c and DN20c section

**Notes:** Self-ejecting devices are modified to allow straight insertion. This defeats the safety shutter and voids the device's switch-rating.



## Self-Ejecting Plug

For self-ejecting plugs, a lever mechanism is added to the assembly and attached to the power cable via a tension cord. When tension is applied to the power cable, the tension cord rotates the lever mechanism, which in turn lifts the standard pawl on the receptacle and releases the plug before damage can occur.



### Available on:

DSN20, DSN30, DSN60

DS20, DS30, DS60, DS100C

DSN12c, DSN24c, DSN37c, DS7c, DR7c

### How To Order:

To the male inlet, add suffix **-338**

To the female receptacle, add suffix **-352**

To the handle part number, add suffix **443**

#### Example:

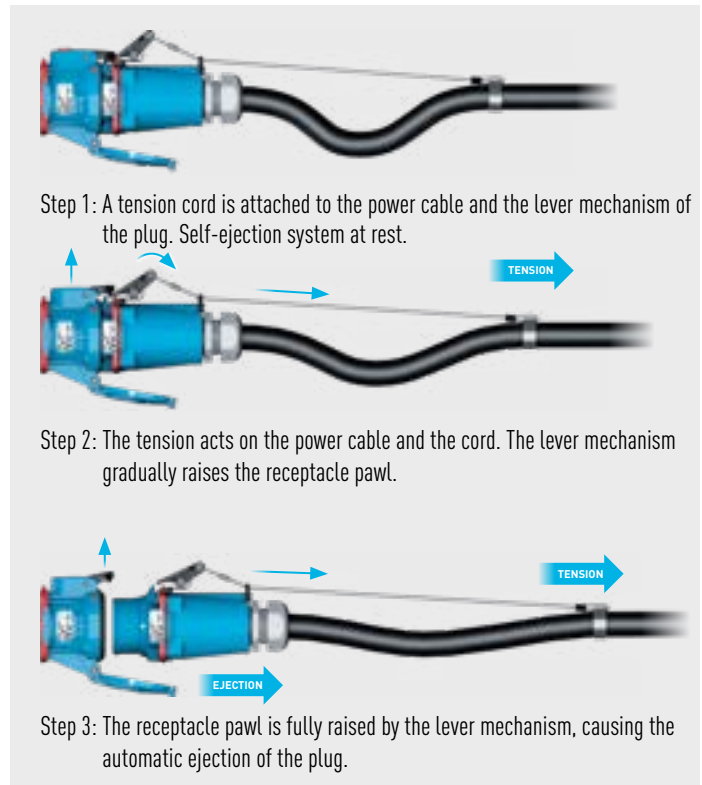
To order a DSN30 self-ejecting plug, receptacle and poly handle (3/4" NPT), the part numbers would be:

Inlet: 63-38043-338

Receptacle (straight Insertion): 63-34043-352

Handle: 512PON07443

**Notes:** Self-ejecting devices are modified to allow straight insertion. This defeats the safety shutter and voids the device's switch-rating.



## Self-Ejecting Plug (DS100, DSN150, DS200, DN20c only)

For self-ejecting plugs on DS100, DSN150, DS200 and DN20c models, a cam mechanism is used in lieu of the 'lever mechanism.' The principle of operation remains the same.

### How To Order:\*

To the male inlet, add suffix **-338**

To the female receptacle, add suffix **-352**

To the handle part number, add suffix **443**

#### Example:

To order a poly DS100 self-ejecting plug, receptacle and poly handle (3/4" NPT), the part numbers would be:

Inlet: 33-98043-338

Receptacle (straight Insertion): 33-94043-352

Handle: 515PON07443

\* For DS200 ordering, use suffixes listed in DS200 section

\* For DN20c ordering, use suffixes listed in DN20c section

**Notes:** Self-ejecting devices are modified to allow straight insertion. This defeats the safety shutter and voids the device's switch-rating.

